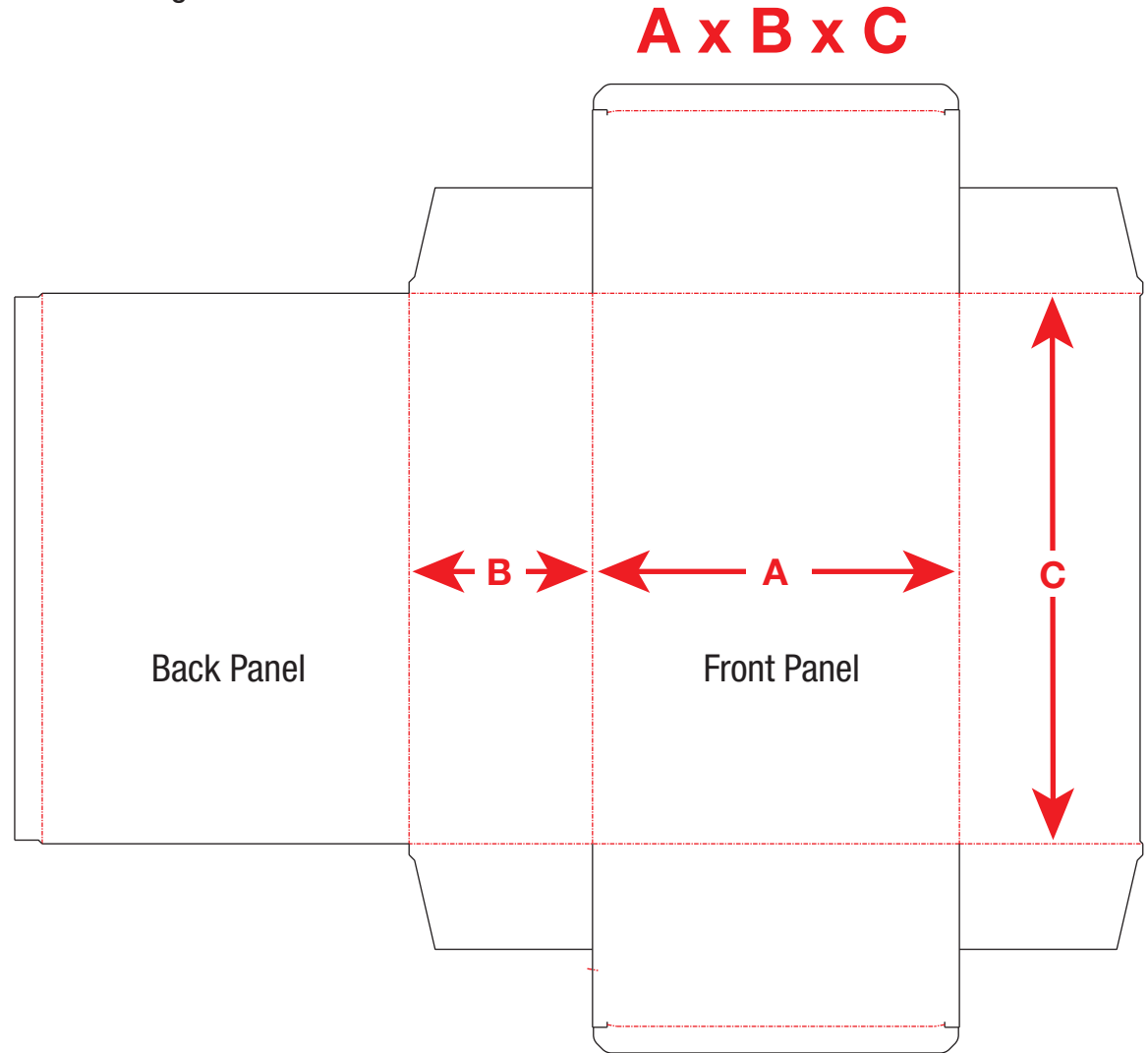
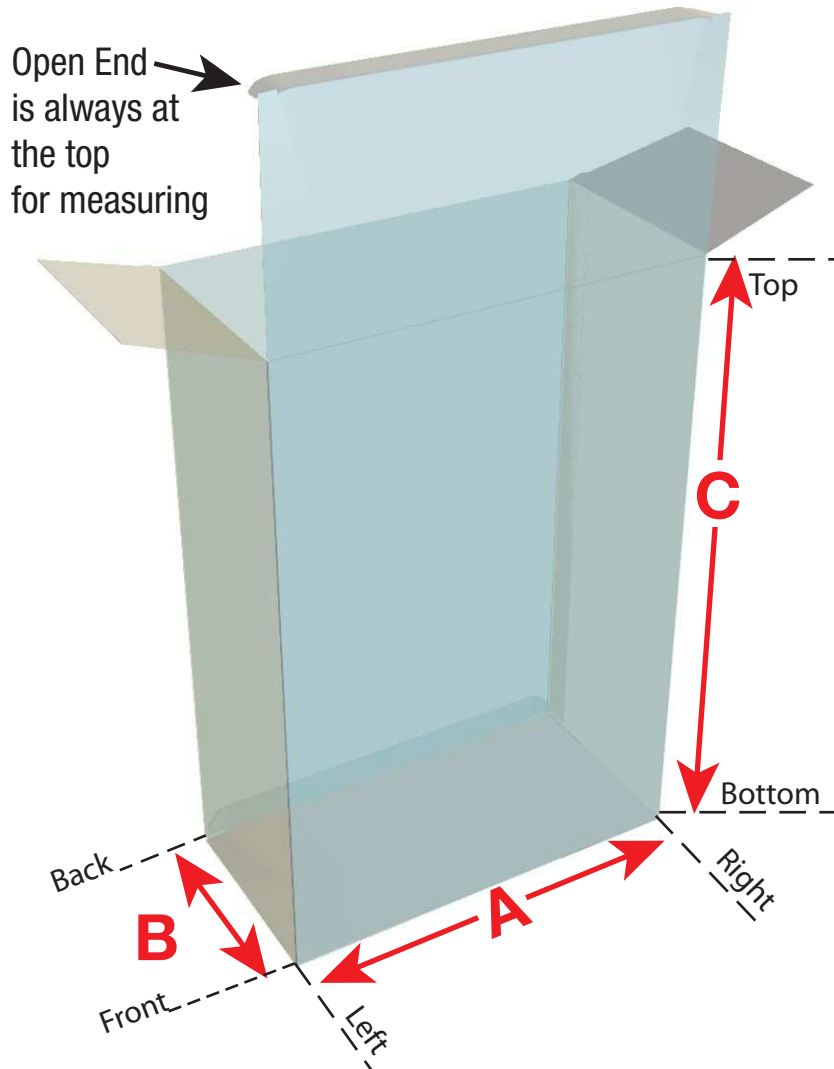




How to measure a box:

How to dimension a box correctly? Always make sure that the opening is at the top and bottom for measuring (even if that is not how it will display). That way you know where **A x B x C** are in relation to the opening. Measure from left to right to get **A**. Then measure from front to back to get **B**. Then measure from the top to the bottom to get **C** dimension.



Long Island Location:

555 Raymond Drive
Islandia, NY 11749
631-234-4300

Montreal Location:

3478 Ashby
St. Laurent, Quebec H4R 2C1
1-800-454-5269 • 514-335-1775

Ontario Location:

3380 South Service Rd
Burlington, Ontario L7N 3J5
1-800-461-8106