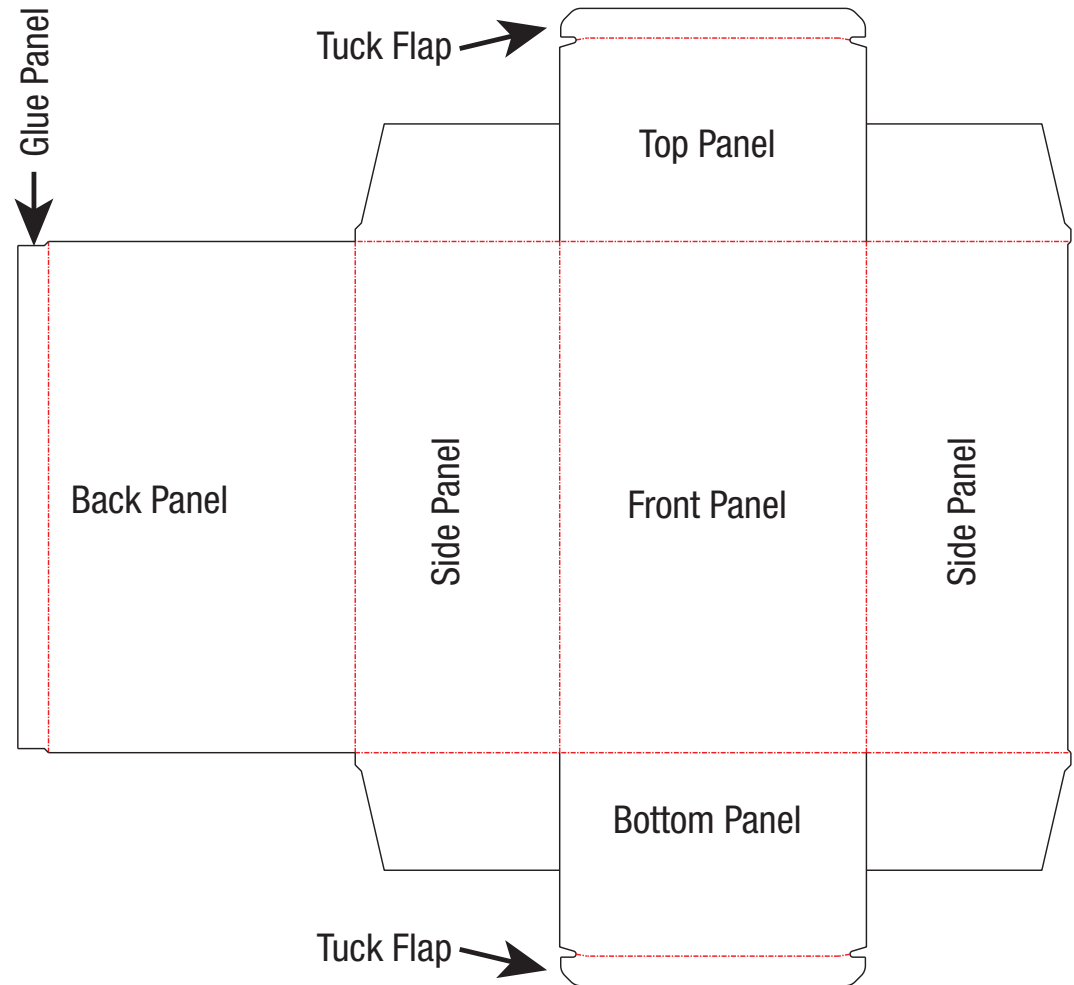
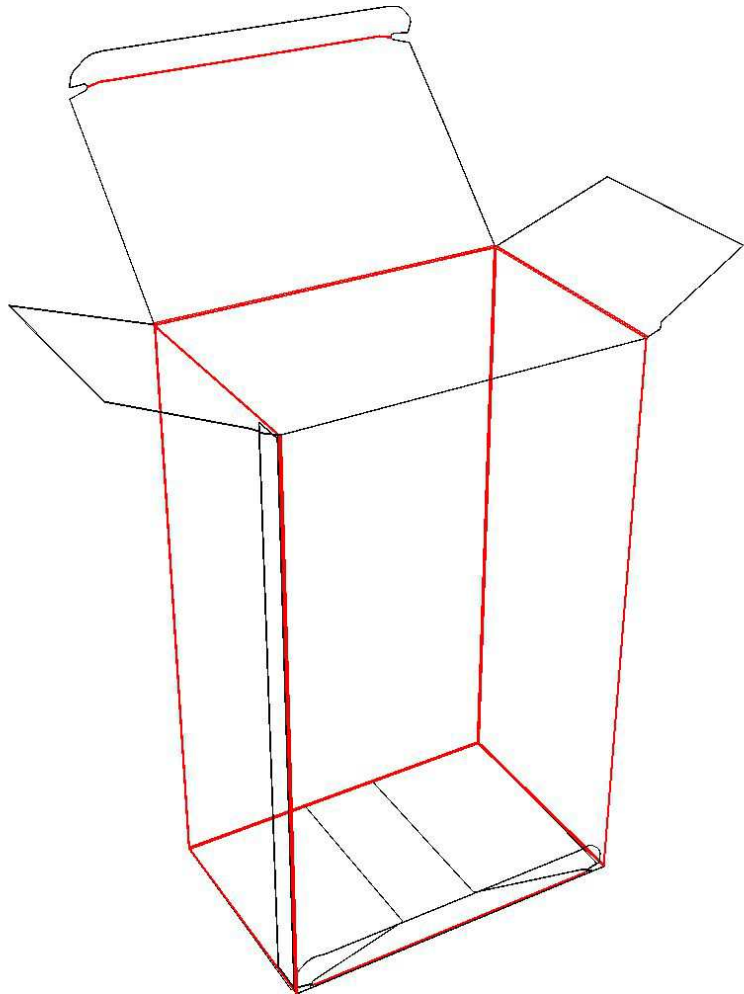




# Tuck Top / Straight Tuck

This clear folding box style features closure panels on both the top and bottom that swing from the front to tuck into the back. This basic style works for both top and side loading package designs.



[www.ptpackaging.com](http://www.ptpackaging.com)

**Long Island Location:**  
555 Raymond Drive  
Islandia, NY 11749  
631-234-4300

**Montreal Location:**  
3478 Ashby  
St. Laurent, Quebec H4R 2C1  
1-800-454-5269 • 514-335-1775

**Ontario Location:**  
3380 South Service Rd  
Burlington, Ontario L7N 3J5  
1-800-461-8106